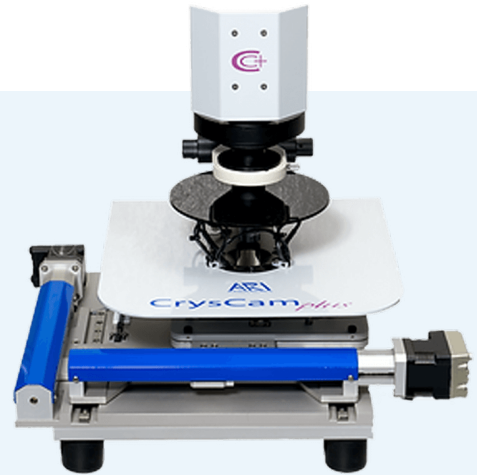


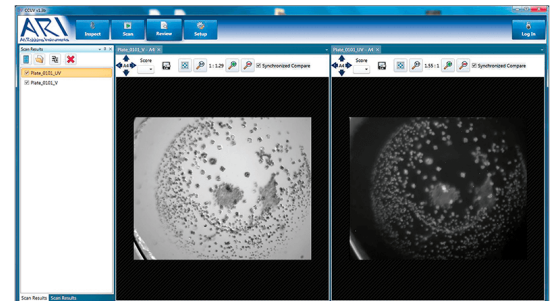
ARI CrysCam plus

The CrysCam plus is the versatile and affordable solution for all of your plate imaging needs. CrysCam owners can update their existing systems to the new CrysCam plus with UV imaging capabilities.



Features

- Modular customized configurations
- Available with 1 or 2 objectives, 5X, 10X, 15X
- View both visible and UV images for any well side-by-side
- 6 MP camera, monochromatic
- Compatible with polarization and fluorophores, such as CY3 and GFP
- Score and compare wells of interest
- Compatible with all SBS format plates, LCP slides, Linbro, and VDX plates
- Multi-seat software license allows all users to view images from their personal computer
- Can be placed in a cold room



Order Information

CAT # 610-8000-10

Includes computer and multi-seat software license